

2019 IEEE 1st Global Conference on Life Sciences and Technologies

# LifeTech 2019

March 12-14, 2019  
Senri Life Science Center,  
Osaka, Japan

Conference Chair  
Tomohiro Hase, JP

Conference Co-Chair  
Stefan Mozar, AU

TPC Chairs  
Carole Carey, US  
Donna Hudson, US  
Luis Kun, US  
Chris Lee, TW  
Takako Nonaka, JP

Vice-TPC Chairs  
Kazuyuki Kojima, JP  
Emi Yuda, JP

Publication Chair  
Wataru Uemura, JP  
Ryota Nishimura, JP

Treasurer  
Emi Yuda, JP

Contact  
[support@ieee-lifetech.org](mailto:support@ieee-lifetech.org)

URL  
[www.ieee-lifetech.org](http://www.ieee-lifetech.org)

## Call for Papers

The 2019 IEEE 1st Global Conference on Life Sciences and Technologies (**LifeTech 2019**) is a newly launched annual international conference sponsored by IEEE Life Sciences Technical Community.

LifeTech 2019 will bring together top technical professionals from the life science industry and academia, to exchange information and results of state-of-the-art work on systems, devices, technologies, processes, and applications.

Attending LifeTech 2019, researchers, system developers, and service providers will be able to share their ideas, designs, and experience in emerging technologies.

Please join and experience the powerful synergistic effects of LifeTech 2019!

### Topics & Keywords

LifeTech 2019 is asking for submissions of technical papers for **Oral** and **Poster/Demo** presentations. **Student papers** and **WIE papers** are particularly encouraged.

# **Student papers**: Their first authors and presenters are students.

# **WIE papers**: Their first authors and presenters are women.

Papers reporting new developments in all areas of Life Sciences are welcome. The topics of interest to be covered by LifeTech 2019 include, but are not limited to,

Bio Technologies, Healthcare, Medical Technologies, User Interface, Design methodologies, Welfare Technologies, Enabling Device, Enabling Technologies, etc.

### Sponsor

IEEE Life Sciences Technical Community;

- Circuits and Systems Society
- Consumer Electronics Society
- Control Systems Society
- Engineering in Medicine and Biology Society
- Signal Processing Society
- Society on Social Implications of Technology Society

### Technical Sponsors

HIS

<http://www.his.gr.jp>

IEE

<http://www.iee.jp>

IEICE

<http://www.ieice.org/jpn/>

IEIJ

<http://www.ieij.or.jp>

IPJSJ

<https://www.ipsj.or.jp>

ITE

<http://www.ite.or.jp>

JES

<https://www.ergonomics.jp>

JIPE

<http://www.jipe.org>

JSKE

<https://www.jske.org/>

JSMBE

<http://jsmbe.org>

SICE

<http://www.sice.jp>

**Important  
Dates (JST)**

Organized Session Proposal **November 26, 2018**

2-page Paper Submission: **December 17, 2018**

Acceptance Notification: **January 16, 2019**

Final Paper Submission: **January 28, 2019**

Conference: **March 12-14, 2019**

For more information: <http://www.ieee-lifetech.org>

## Topics & Keywords

The topics covered by LifeTech 2019 include, but are not limited to,

### Bio Technologies

Biosensor technologies, Bio-signal processing, Biosensor based mobile health apps, Bioinformatics, Biometrics, Synthetic biology

### Healthcare

Virtual reality in healthcare, IoT for healthcare, Big Data for healthcare

### Medical Technologies

Virtual reality in medicine, IoT for medicine, Big Data for medicine, Medical control systems, Electronic medical records

### User Interface

Brain-computer interfaces, Wearable sensors and devices, Human factors/Ergonomics, Human errors and Psycho-physiology, Kansei engineering/Affective engineering

### Design methodologies

Human centered design/Universal design, Design methodologies and app development

### Welfare Technologies

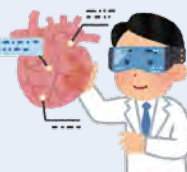
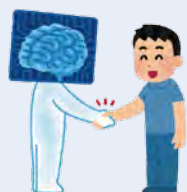
Welfare Technologies, Rehabilitation and assistive technologies, Assist service for enable/handicap

### Enabling Device

Smart devices and technologies, Smart garments/textiles, Home electrical appliance for cosmetics/beauty, Point of Care devices

### Enabling Technologies

Imaging technologies and processing, Data preprocessing, cleansing, management, mining, and integration, Point of Care technologies, Security and privacy, Deep learning and pattern recognition, Energy harvesting/scavenging technologies, Wireless communication and networking, Social implications of technologies, Power assist and Robotics



## LifeTech 2019 Welcomes Submissions for Organized Sessions!

OS-AIH: AI Technology Based Healthcare & Health Promotion Applications

OS-AIT: Advanced Image Technology in Applied Life Science: IoT & Deep Learning Perspectives

OS-BIO: Biomedical Data Processing & Its Applications to Multimedia

OS-BRF: New Technology Based on Brain Function Measurement & Stimulation

OS-CMI: Clinical Medical Image Processing

OS-HIT: Future of Healthcare IoT/ICT

OS-PSY: Psychophysiological Strategy of Human-Centered Consumer Product Design

OS-SHL: Sensing Technologies & Applications for Human Life Support

OS-SWT: Health & Wellness Care Applications of Smart Wearable Technologies